

Georges River Council
Hurstville Golf Club
57 Lorraine Street, Mortdale, 2230



57 Lorraine street, Mortdale

NOT TO SCALE

DRAWING LIST		KEYNOTE LEGEND	
DWG	DRAWING NAME	AC	AIR CONDITIONING
0101	COVERSHEET	B1	BALUSTRADE - TYPE 1
0105	SITE ANALYSIS	BBQ	BARBEQUE
0201	SITE PLAN	BN	BN
0202	SITE DEMOLITION PLAN	BT	BENCHTOP
0203	LANDSCAPE PLAN - SHEET 1 OF 2	CB1	CONCRETE BLOCKWORK - TYPE 1
0204	LANDSCAPE PLAN - SHEET 2 OF 2	COL	COLUMN
0205	NOTIFICATION PLAN	DP	DOWNPIPE
0206	SHADOW DIAGRAMS - DECEMBER 21	EG	EAVES GUTTER
0207	SHADOW DIAGRAMS - JUNE 21	F1	FENCE - TYPE 1
0208	ENVIRONMENTAL SITE CONSTRUCTION MANAGEMENT PLAN	F3	FENCE - TYPE 3
0211	Unnamed	GD	GRATED DRAIN
0301	GROUND FLOOR PLAN	LK	LOCKER
0302	FIRST FLOOR PLAN	LWC	LIGHT WEIGHT CLADDING
0303	ROOF FLOOR PLAN	LWC1	LIGHT WEIGHT CLADDING - TYPE 1
0401	ELEVATIONS - SHEET 1	PAV2	PAVING - TYPE 2
0402	ELEVATIONS - SHEET 2	PRS	POLYCARBONATE ROOF SHEETING
0403	ELEVATIONS - STREETSCAPE ANALYSIS	RWT	RAIN WATER TANK
0501	SECTIONS - SHEET 1	SC	STORAGE CABINET
1001	3Ds AND MATERIALS		

WALL ASSEMBLIES	
	WA3K PROSHOP EXTERNAL WALLS 250mm Block Veneer Wall
	WA3H AMENITIES EXTERNAL WALL 250mm Double Masonary Wall
	WA3G STORAGE SHED EXTERNAL WALL 210mm Light Weight Cladding Wall

SAFETY IN DESIGN LEGEND	
HAZARD DESCRIPTION	
	INDICATES AMENITIES, FACILITIES, AND FIRST AID SERVICES
	INDICATES HIGH RISK ACTIVITIES ASSOCIATED WITH LIVE ELECTRICAL HAZARDS
	INDICATES HIGH RISK ACTIVITIES ASSOCIATED WITH EARTHWORKS / EXCAVATION
	INDICATES HIGH RISK ACTIVITIES ASSOCIATED WITH FIRE AND EMERGENCIES
	INDICATES HIGH RISK ACTIVITIES ASSOCIATED WITH MANUAL TASKS AND/OR MAINTENANCE ACCESS
	INDICATES HIGH RISK ACTIVITIES ASSOCIATED WITH NOISE EXPOSURE
	INDICATES HIGH RISK ACTIVITIES ASSOCIATED WITH PLANT EQUIPMENT
	INDICATES HIGH RISK ACTIVITIES ASSOCIATED WITH THE MOVEMENT OF PEOPLE AND/OR MATERIALS
	INDICATES PROJECT SPECIFIC RISKS - OUTLINED BELOW WHERE APPLICABLE
	INDICATES HIGH RISK ACTIVITIES ASSOCIATED WITH HAZARDOUS SUBSTANCES
	INDICATES HIGH RISK ACTIVITIES ASSOCIATED WITH STRUCTURAL SAFETY AND/OR DEMOLITION WORKS
	INDICATES HIGH RISK ACTIVITIES ASSOCIATED WITH WORKING ENVIRONMENT AND/OR CONFINED SPACES
	INDICATES HIGH RISK ACTIVITIES ASSOCIATED WITH WORKING AT HEIGHTS AND/OR FALLING OBJECTS



ARCHITECTURAL IMPRESSION

REV	DATE	DESCRIPTION	BY	CHK
A	19/12/19	ISSUE FOR SKETCH QA	SN	TH
B	03/02/20	ISSUE TO LANDSCAPE ARCHITECT	SN	
C	10/02/20	ISSUE TO CONSULTANTS	SN	
D	14/02/20	CLIENT REVIEW & DA QA	SN	JW
E	28/02/20	ISSUE FOR DA	SN	

DRAWINGS COLOUR CODED
PRINT ALL COPIES IN COLOUR

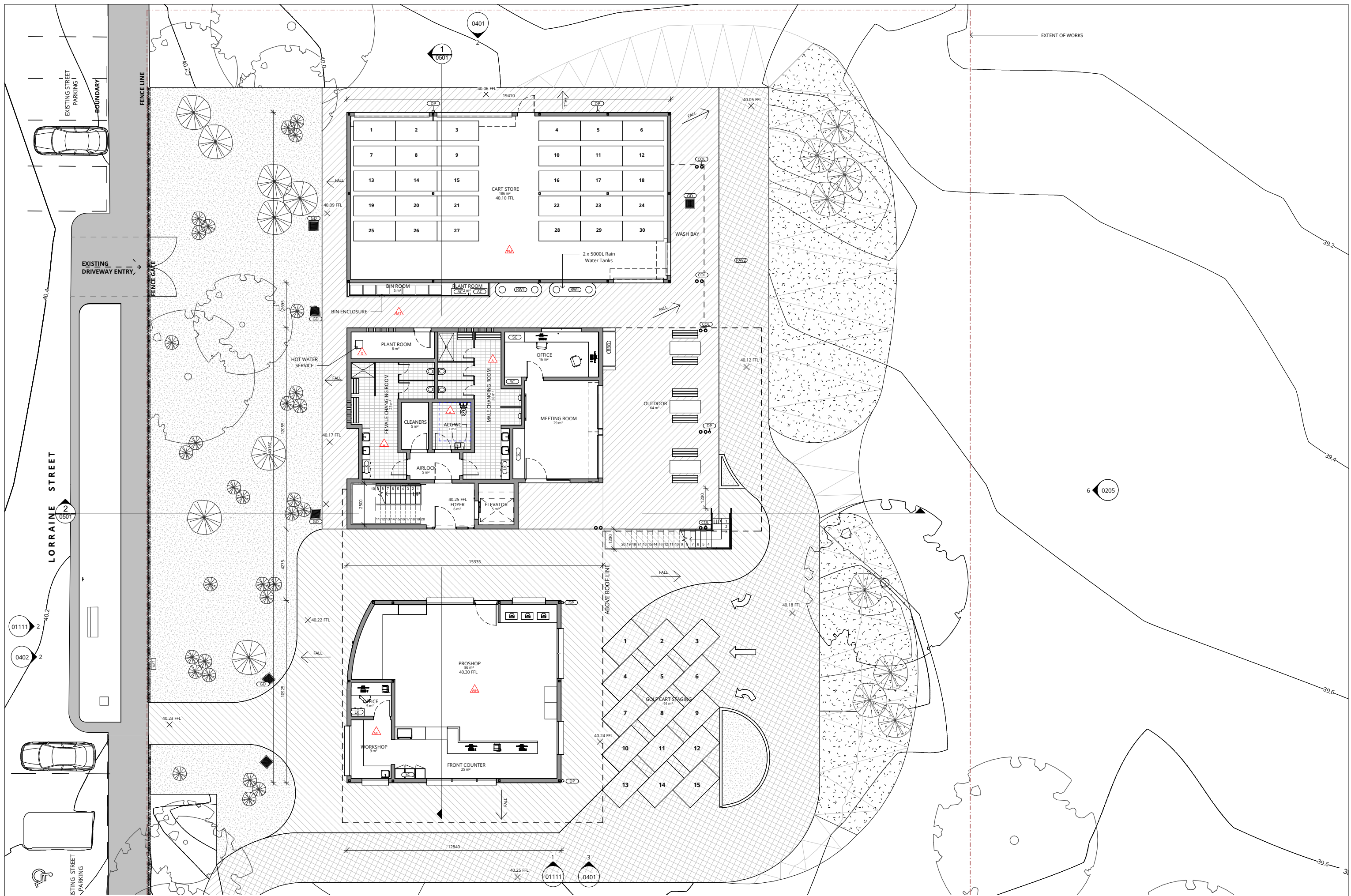
PRINT DATE: 2/03/2020 12:45:21 PM FILE PATH: C:\Users\lnehat\Documents\2096_5_2 Hurstville Golf Club_Tender Documentation_lnehat\DA027.rvt

THIS DRAWING AND DESIGN EXPRESSED ARE COPYRIGHT AND REMAIN THE PROPERTY OF WEBBER ARCHITECTS. IN ACCORDANCE WITH THE COMMONWEALTH COPYRIGHT ACT 1968 THIS DRAWING AND DESIGN IN WHOLE OR PART MAY NOT BE USED UNLESS LICENCED BY WEBBER ARCHITECTS. VERIFY ALL DIMENSIONS AND FALLS ON SITE BEFORE CONSTRUCTION AND DO NOT SCALE FROM DRAWING.



REV	DATE	DESCRIPTION	BY	CHK
A	09/12/19	CONCEPT PRESENTATION	SN	
B	10/12/19	FOR PLANNING FEEDBACK	SN	
C	13/12/19	CONCEPT DESIGN	SN	
D	19/12/19	ISSUE FOR SKETCH QA	SN	TH
E	10/02/20	ISSUE TO CONSULTANTS	SN	
F	14/02/20	CLIENT REVIEW & DA QA	SN	JW
G	28/02/20	ISSUE FOR DA	SN	

DRAWINGS COLOUR CODED
PRINT ALL COPIES IN COLOUR



REV	DATE	DESCRIPTION	BY	CHK
A	09/12/19	CONCEPT PRESENTATION	SN	
B	10/12/19	FOR PLANNING FEEDBACK	SN	
C	13/12/19	CONCEPT DESIGN	SN	
D	19/12/19	ISSUE FOR SKETCH QA	SN	TH
E	10/02/20	ISSUE TO CONSULTANTS	SN	
F	14/02/20	CLIENT REVIEW & DA QA	SN	JW
G	28/02/20	ISSUE FOR DA	SN	

DRAWINGS COLOUR CODED
PRINT ALL COPIES IN COLOUR

BUILDER TO CONFIRM ALL DETAILS, SETOUTS, ETC. A FALLS & CONNECTIONS ON SITE BEFORE CONSTRUCTION

PRINT DATE: 2/03/2020 12:45:53 PM FILE PATH: C:\Users\snethai\Documents\3096_5.2 Hurstville Golf Club_Tender Documentation_snehai0407.rvt



webber

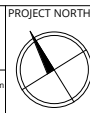
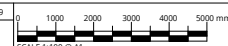
Phone: 02 8608 1078
PO Box 807 The Junction NSW 2201
www.webberarchitects.com.au
Suite 3, Level 1, 408 Hunter Street Newcastle NSW 2260
newcastle@webberarchitects.com.au
Suite 206, 9 Clarke Street Cronulla NSW 2230
cphay@webberarchitects.com.au
www.webberarchitects.com.au

ISSUED
FOR DA APPROVAL
NOT FOR CONSTRUCTION

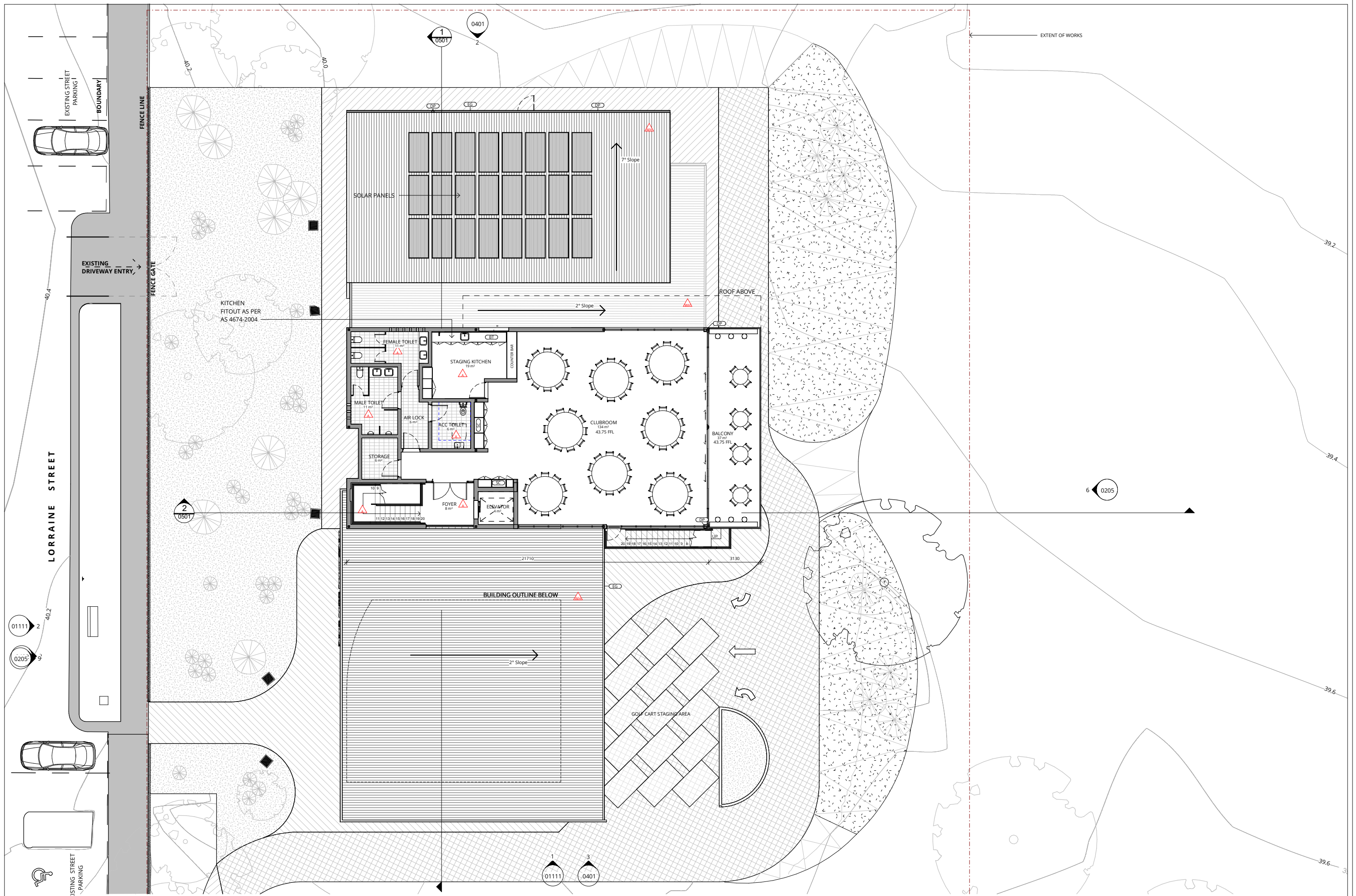
SHEET NUMBER: 2696 / 0301 / G

GROUND FLOOR PLAN
Hurstville Golf Club
Georges River Council
57 Lorraine Street, Mortdale, 2230

COMMENCEMENT DATE: 18.11.2019



THIS DRAWING AND DESIGN EXPRESSED ARE COPYRIGHT AND REMAIN THE PROPERTY OF WEBBER ARCHITECTS. IN ACCORDANCE WITH THE COMMONWEALTH COPYRIGHT ACT 1968 THIS DRAWING AND DESIGN IN WHOLE OR PART MAY NOT BE USED UNLESS LICENCED BY WEBBER ARCHITECTS. VERIFY ALL DIMENSIONS AND FALLS ON SITE BEFORE CONSTRUCTION AND DO NOT SCALE FROM DRAWING.



REV	DATE	DESCRIPTION	BY	CHK
A	09/12/19	CONCEPT PRESENTATION	SN	
B	10/12/19	FOR PLANNING FEEDBACK	SN	
C	13/12/19	CONCEPT DESIGN	SN	
D	19/12/19	ISSUE FOR SKETCH QA	SN	TH
E	10/02/20	ISSUE TO CONSULTANTS	SN	
F	14/02/20	CLIENT REVIEW & DA QA	SN	JW
G	28/02/20	ISSUE FOR DA	SN	

DRAWINGS COLOUR CODED
PRINT ALL COPIES IN COLOUR

BUILDER TO CONFIRM ALL DETAILS, SETOUTS (PILE, ETC.), FALLS & CONNECTIONS ON SITE BEFORE CONSTRUCTION

PRINT DATE: 2/03/2020 12:45:58 PM FILE PATH: C:\Users\stehat\Documents\2096_5.2 Hurstville Golf Club_Tender Documentation_stehat\4067.rvt



webber

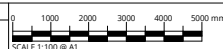
Phone: 02 8608 1078
PO Box 807 The Junction NSW 2201
www.webberarchitects.com.au
Suite 3, Level 1, 408 Hunter Street Newcastle NSW 2260
newcastle@webberarchitects.com.au
Suite 206, 8 Clarke Street Crows Nest NSW 2058
sydney@webberarchitects.com.au
webberarchitects.com.au

ISSUED
FOR DA APPROVAL
NOT FOR CONSTRUCTION

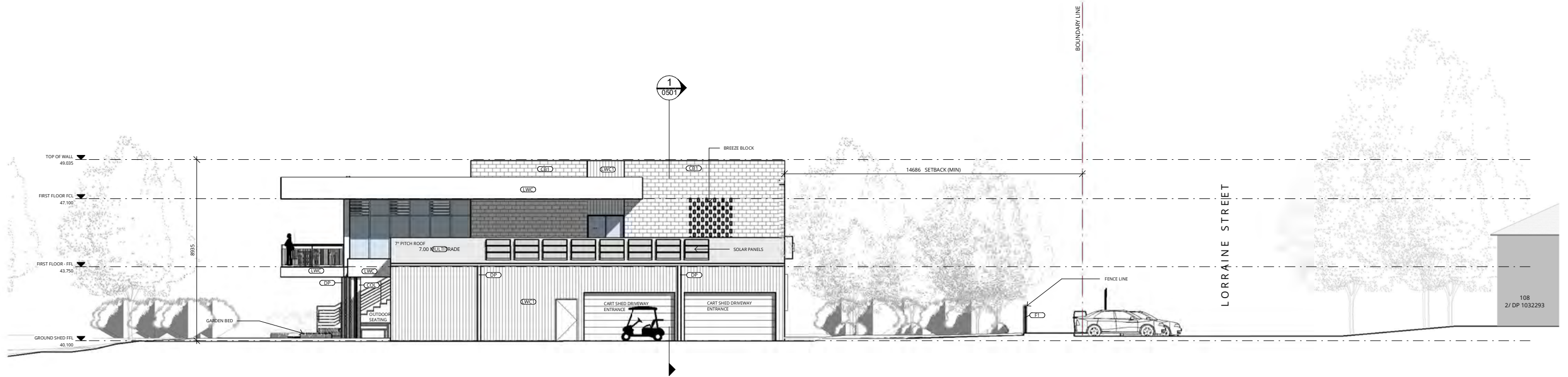
SHEET NUMBER: 2696 / 0302 / G

FIRST FLOOR PLAN
Hurstville Golf Club
Georges River Council
57 Lorraine Street, Mortdale, 2230

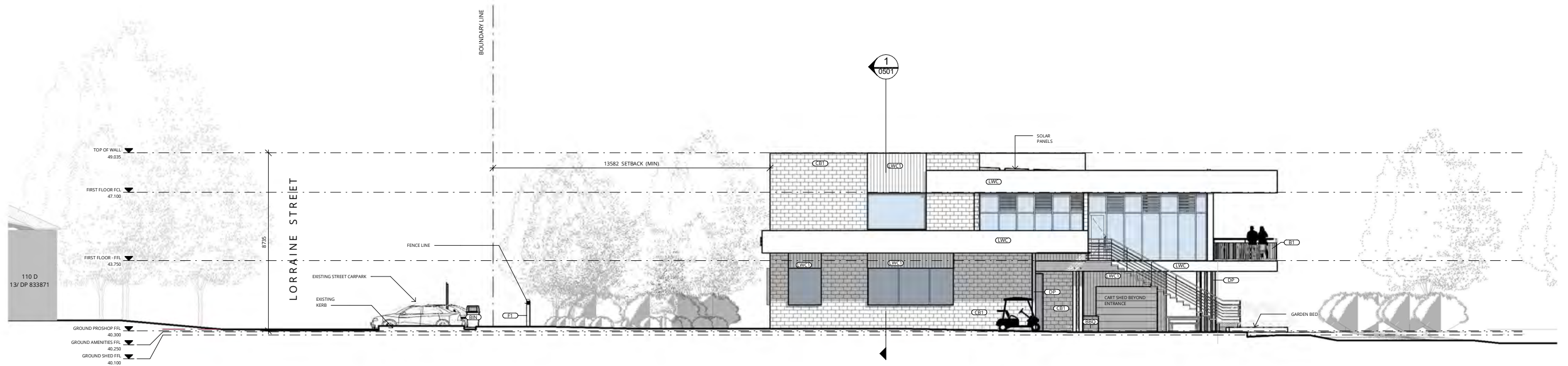
COMMENCEMENT DATE: 18.11.2019



THIS DRAWING AND DESIGN EXPRESSED ARE COPYRIGHT AND REMAIN THE PROPERTY OF WEBBER ARCHITECTS. IN ACCORDANCE WITH THE COMMONWEALTH COPYRIGHT ACT 1968 THIS DRAWING AND DESIGN IN WHOLE OR PART MAY NOT BE USED UNLESS LICENCED BY WEBBER ARCHITECTS. VERIFY ALL DIMENSIONS AND FALLS ON SITE BEFORE CONSTRUCTION AND DO NOT SCALE FROM DRAWING.



NORTH ELEVATION
SCALE 1:100



SOUTH ELEVATION
SCALE 1:100

REV	DATE	DESCRIPTION	BY	CHK
A	09/12/19	CONCEPT PRESENTATION	SN	
B	10/12/19	FOR PLANNING FEEDBACK	SN	
C	13/12/19	CONCEPT DESIGN	SN	
D	19/12/19	ISSUE FOR SKETCH QA	SN	TH
E	10/02/20	ISSUE TO CONSULTANTS	SN	
F	14/02/20	CLIENT REVIEW & DA QA	SN	JW
G	28/02/20	ISSUE FOR DA	SN	

DRAWINGS COLOUR CODED
PRINT ALL COPIES IN COLOUR

BUILDER TO CONFIRM ALL DETAILS, SETOUTS, ETC. A FALLS & CONNECTIONS ON SITE BEFORE CONSTRUCTION

PRINT DATE: 2/03/2020 12:46:10 PM FILE PATH: C:\Users\lshah\Documents\2696_5.2 Hurstville Golf Club Tender Documentation_snhshd467.rvt



webber

Phone: 02 8608 1076
PO Box 807 The Junction NSW 2201
www.webberarchitects.com.au
Suite 3, Level 1, 428 Hunter Street Newcastle NSW 2300
newcastle@webberarchitects.com.au
Suite 206, 8 Clarke Street Cronulla NSW 2230
cphay@webberarchitects.com.au
www.webberarchitects.com.au

ISSUED
FOR DA APPROVAL
NOT FOR CONSTRUCTION

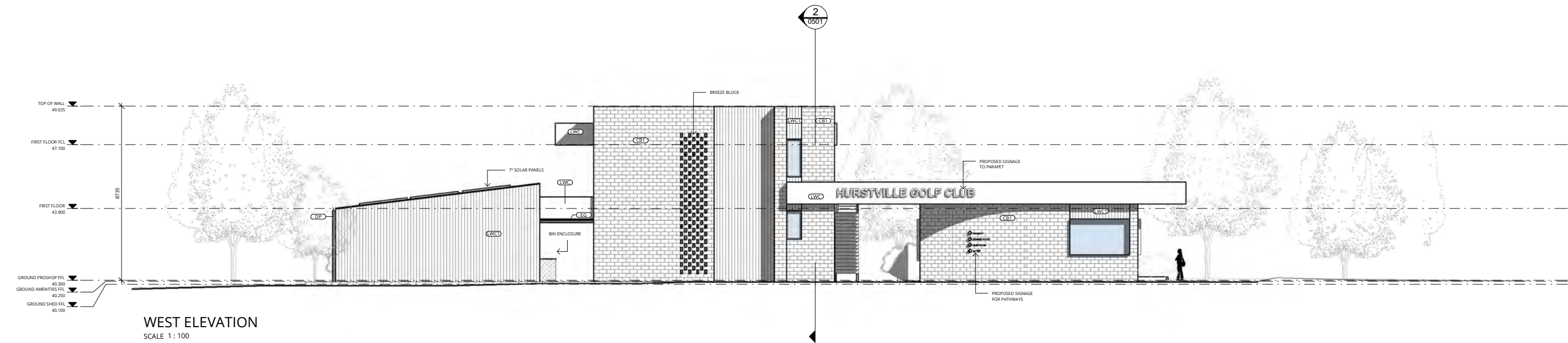
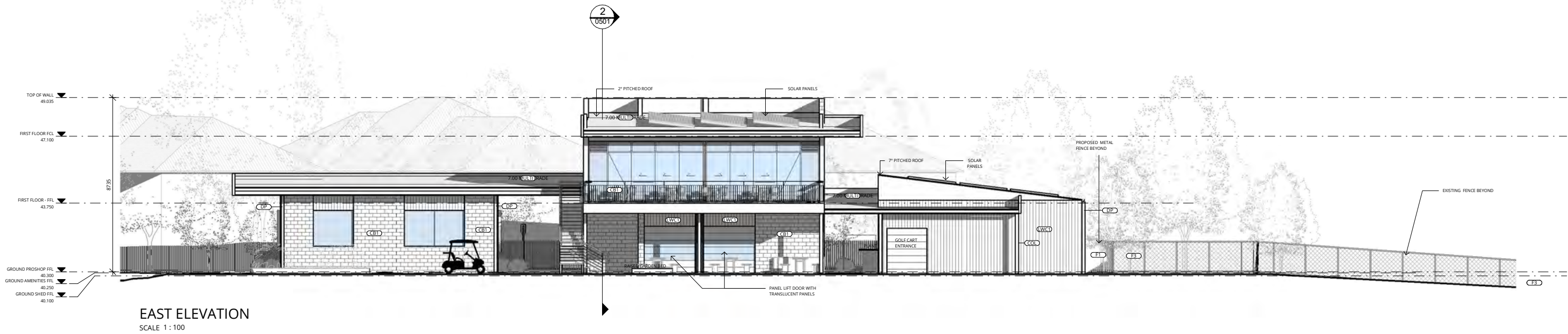
SHEET NUMBER: 2696 / 0401 / G

ELEVATIONS - SHEET 1
Hurstville Golf Club
Georges River Council
57 Lorraine Street, Mortdale, 2230

COMMENCEMENT DATE: 18.11.2019

0 1000 2000 3000 4000 5000 mm
SCALE 1:100 @ A1

THIS DRAWING AND DESIGN EXPRESSED ARE COPYRIGHT AND REMAIN THE PROPERTY OF WEBBER ARCHITECTS. IN ACCORDANCE WITH THE COMMONWEALTH COPYRIGHT ACT 1968 THIS DRAWING AND DESIGN IN WHOLE OR PART MAY NOT BE USED UNLESS LICENCED BY WEBBER ARCHITECTS. VERIFY ALL DIMENSIONS AND FALLS ON SITE BEFORE CONSTRUCTION AND DO NOT SCALE FROM DRAWING.



REV	DATE	DESCRIPTION	BY	CHK
A	09/12/19	CONCEPT PRESENTATION	SN	
B	10/12/19	FOR PLANNING FEEDBACK	SN	
C	13/12/19	CONCEPT DESIGN	SN	
D	19/12/19	ISSUE FOR SKETCH QA	SN	TH
E	10/02/20	ISSUE TO CONSULTANTS	SN	
F	14/02/20	CLIENT REVIEW & DA QA	SN	JW
G	28/02/20	ISSUE FOR DA	SN	

DRAWINGS COLOUR CODED
PRINT ALL COPIES IN COLOUR

PRINT DATE: 2/03/2020 12:46:15 PM FILE PATH: C:\Users\stehat\Documents\2696_5.2 Hurstville Golf Club_Tender Documentation.sth\0402.rvt



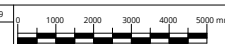
webber

Phone: 02 4608 1076
PO Box 807 The Junction NSW 2201
www.webberarchitects.com.au
Suite 3, Level 1, 428 Hunter Street Newcastle NSW 2260
newcastle@webberarchitects.com.au
Suite 206, 8 Clarke Street Cronulla NSW 2230
cphay@webberarchitects.com.au

ISSUED
FOR DA APPROVAL
NOT FOR CONSTRUCTION

ELEVATIONS - SHEET 2
Hurstville Golf Club
Georges River Council
57 Lorraine Street, Mortdale, 2230

COMMENCEMENT DATE: 18.11.2019



SHEET NUMBER: 2696 / 0402 / G

BUILDER TO CONFIRM ALL DETAILS, SETOUTS, ETC. A FALLS & CONNECTIONS ON SITE BEFORE CONSTRUCTION

THIS DRAWING AND DESIGN EXPRESSED ARE COPYRIGHT AND REMAIN THE PROPERTY OF WEBBER ARCHITECTS. IN ACCORDANCE WITH THE COMMONWEALTH COPYRIGHT ACT 1968 THIS DRAWING AND DESIGN IN WHOLE OR PART MAY NOT BE USED UNLESS LICENCED BY WEBBER ARCHITECTS. VERIFY ALL DIMENSIONS AND FALLS ON SITE BEFORE CONSTRUCTION AND DO NOT SCALE FROM DRAWING.



STREETSCAPE VIEW



STREET SECTION VIEW

REV	DATE	DESCRIPTION	BY	CHK
A	14/02/20	CLIENT REVIEW & DA DA	SN	JW
B	28/02/20	ISSUE FOR DA	SN	

DRAWINGS COLOUR CODED
PRINT ALL COPIES IN COLOUR

BUILDER TO CONFIRM ALL DETAILS, SETOUTS (PILE, ETC.) FALLS & CONNECTIONS ON SITE BEFORE CONSTRUCTION

PRINT DATE: 2/03/2020 12:46:16 PM FILE PATH: C:\Users\lnehal\Documents\2696_5.2 Hurstville Golf Club_Tender Documentation_lnehal\B4DE7.rvt



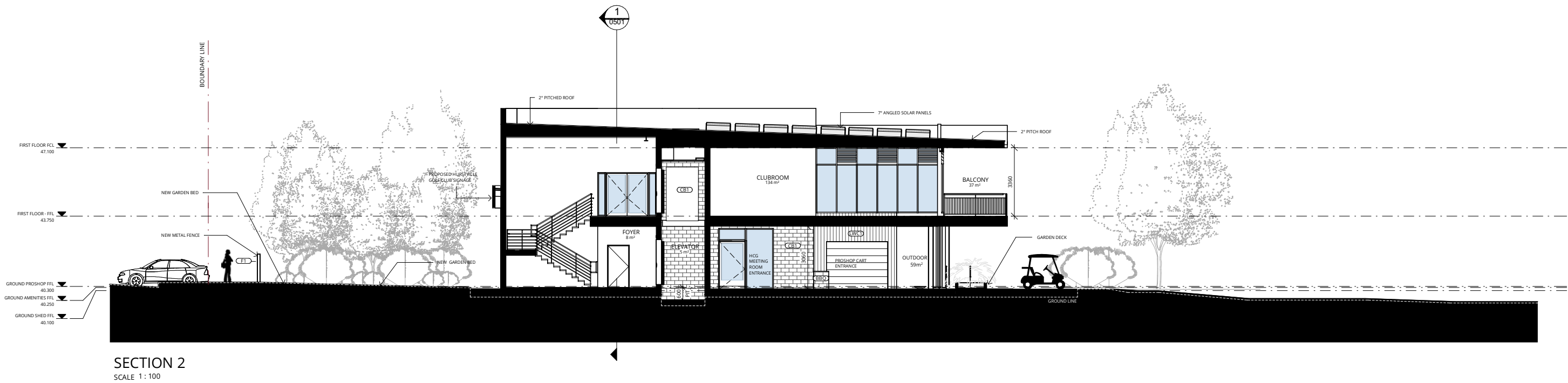
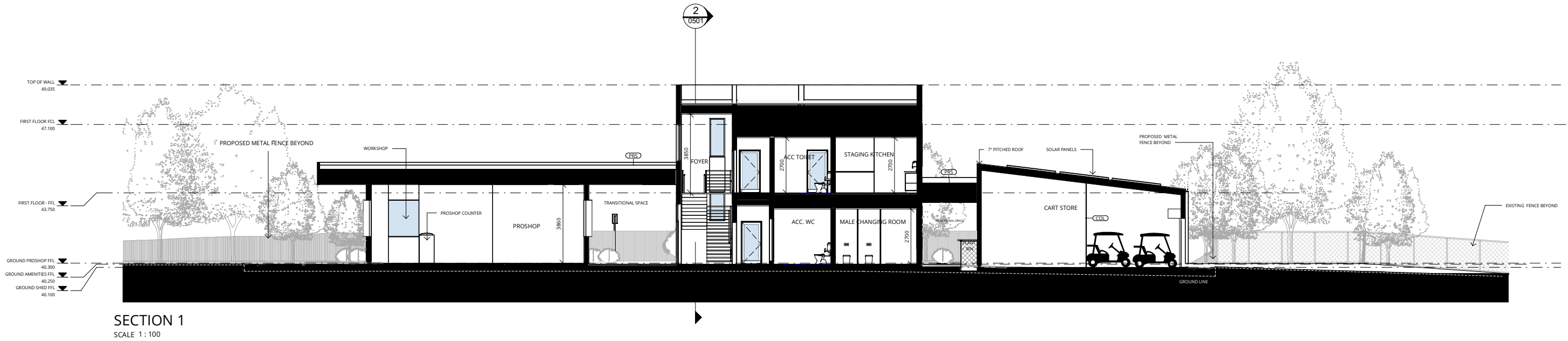
webber

Phone: 02 4608 1076
PO Box 807 The Junction NSW 2201
www.webberarchitects.com
Suite 3, Level 1, 428 Hunter Street Newcastle NSW 2260
newcastle@webberarchitects.com
Suite 206, 8 Clarke Street Crows Nest NSW 2058
sydney@webberarchitects.com
© 2019 Webber Architects Pty Limited. All rights reserved. 2696_5.2

ISSUED
FOR DA APPROVAL
NOT FOR CONSTRUCTION

SHEET NUMBER: 2696 / 0403 / B

ELEVATIONS - STREETSCAPE ANALYSIS
Hurstville Golf Club
Georges River Council
57 Lorraine Street, Mortdale, 2230
COMMENCEMENT DATE: 18.11.2019 SCALE



REV	DATE	DESCRIPTION	BY	CHK
A	19/12/19	ISSUE FOR SKETCH QA	SN	TH
B	10/02/20	ISSUE TO CONSULTANTS	SN	
C	14/02/20	CLIENT REVIEW & DA QA	SN	JW
D	28/02/20	ISSUE FOR DA	SN	

DRAWINGS COLOUR CODED
PRINT ALL COPIES IN COLOUR

BUILDER TO CONFIRM ALL DETAILS, SETOUTS (PILE, ETC.) FALLS & CONNECTIONS ON SITE BEFORE CONSTRUCTION

PRINT DATE: 2/03/2020 12:46:21 PM FILE PATH: C:\Users\lnehal\Documents\2696_S2 Hurstville Golf Club_Tender Documentation_sneh4D4E7.rvt



webber

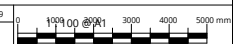
Phone: 02 8608 1076
PO Box 807 The Junction NSW 2201
www.webberarchitects.com.au
Suite 3, Level 1, 408 Hunter Street Newcastle NSW 2300
newcastle@webberarchitects.com.au
Suite 206, 8 Clarke Street Crows Nest NSW 2058
sydney@webberarchitects.com.au
www.webberarchitects.com.au

ISSUED
FOR DA APPROVAL
NOT FOR CONSTRUCTION

SECTIONS - SHEET 1
Hurstville Golf Club
Georges River Council
57 Lorraine Street, Mortdale, 2230

COMMENCEMENT DATE: 18.11.2019

SHEET NUMBER: 2696 / 0501 / D



THIS DRAWING AND DESIGN EXPRESSED ARE COPYRIGHT AND REMAIN THE PROPERTY OF WEBBER ARCHITECTS. IN ACCORDANCE WITH THE COMMONWEALTH COPYRIGHT ACT 1968 THIS DRAWING AND DESIGN IN WHOLE OR PART MAY NOT BE USED UNLESS LICENCED BY WEBBER ARCHITECTS. VERIFY ALL DIMENSIONS AND FALLS ON SITE BEFORE CONSTRUCTION AND DO NOT SCALE FROM DRAWING.